



# Atlas Chiropractic Software System Requirements

## Overview:

Atlas Chiropractic Systems software is designed to run on a variety of network configurations. The information presented here is listed as **Minimum System Requirements**. The specifications are offered to ensure your experience with the Atlas Chiropractic System is the best possible.

Atlas recommends reviewing this document with your chosen IT Professional and communicating with our trained support staff if any questions arise. Just as your patients rely on and trust your opinion on health care, you should be able to rely and trust on your IT Professional.

	<b>Front Desk (Main PC)</b>	<b>Patient Sign In</b>	<b>Adj. Tables Exam Rooms</b>	<b>Touch Screens</b>	<b>Dedicated File Server</b>
<b>Processor</b>	Pentium IV (or higher)	Pentium II (or higher)	Pentium IV (or higher)	Pentium IV (or higher)	Pentium Dual Core
<b>Memory (RAM)</b>	2GB	1GB	2GB	2GB	4GB
<b>Hard Disk</b>	40GB free	40 MB free	40 MB free	40 MB free	80GB free
<b>USB</b>	1 - USB 2.0 free	1 - USB 2.0 free	1 - USB 2.0 free	1 - USB 2.0 free	1 - USB 2.0 free
<b>Monitor</b>	17" LCD 1024x768 min	17" LCD 1024x768 min	17" LCD 1024x768 min	21" LCD touch 1920x1080 HD	17" LCD 1024x768 min
<b>Operating System</b>	XP Pro Vista, Win7	XP Pro Vista, Win7	XP Pro Vista, Win7	XP Pro Vista, Win7	Small Business Windows Server 2003 or 2008
<b>Input</b>	mouse/keyboard	mouse/keyboard	mouse/keyboard	mouse/keyboard	mouse/keyboard
<b>Optical Drive</b>	CD / DVD burner	not required	not required	not required	CD / DVD burner

- Additional**
- Most computers purchased today will be sufficient to run Atlas - special considerations required for Main Computers and File Servers
  - Refer to the remainder of this document or consult with your local IT Technician for additional details and information
  - Touch screens are not required for Atlas but will enhance the experience of using the software, especially at the Adjusting Tables
  - Minimum requirements listed above
  - NOTE: 'Home' versions of Windows Operating systems support a limited number of database connections and should only be used in small office networks
  - While the advanced security offered in a Windows Domain (Active Directory) is beneficial, improperly configuring the settings can cause interference with data transmission across the network. A simple 'File Server' configuration is all that is required for the execution of your Atlas software
  - Additional Hard Drive space may be required for patient images (Xrays, scans, etc) and documentation – most databases and files will not exceed the 40 GB requirement

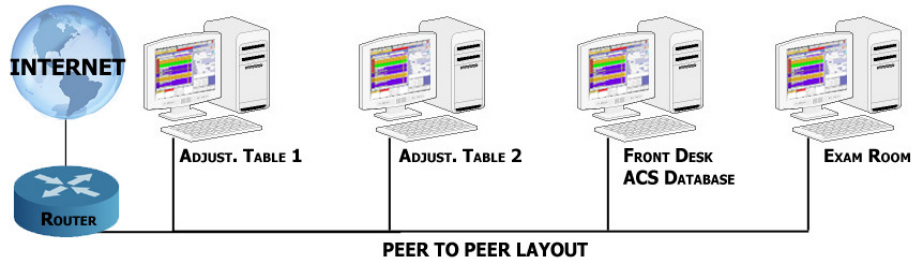


# Atlas Chiropractic Software System Requirements

## Peer to Peer Network:

This setup is recommended only for small offices with less than 9 computers.

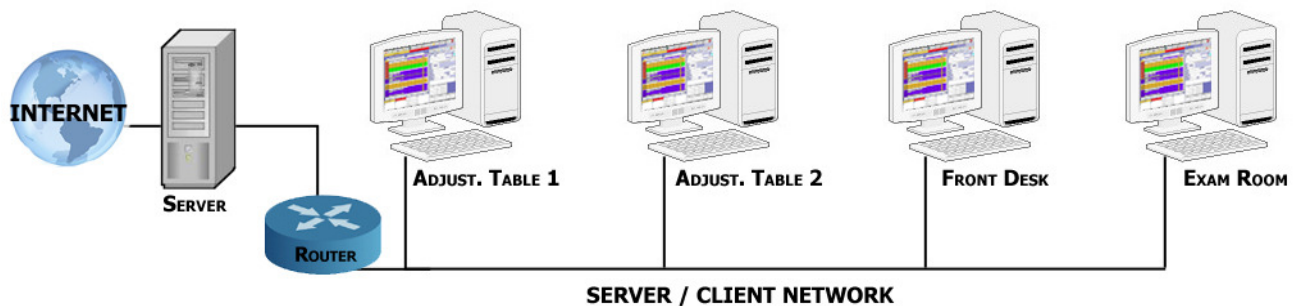
A peer to peer network is one where all computers operate on a desktop Operating System. For the Atlas installation, one computer (usually the Front Desk computer) will hold the Main Database and be used for other daily tasks – such as email, word processing, etc.



## Server Environment:

This setup is recommended only for larger offices with more than 9 computers, multiple providers or offices expecting to expand past 9 computers in the near future.

In a Server / Client network, a main computer (the Server) handles all the data. This computer isn't normally used for daily tasks (word processing, email, etc). Atlas strongly recommends utilizing a dedicated Server in your office. Atlas also supports the use of Thin Client or 'dummy terminals'.



## Touch Screens:

Touch screen computers can be used in place of standard computers at the Adjusting Tables and/or Exam Rooms to replace the Touchpad. This technology replaces standard keyboard and mouse input with touch screen options. Using Touch Screens also allows providers to enter Patient notes using an on-screen 'touchpad'. To properly view and configure the on-screen touchpad option, the monitor must support 1920 x 1080 (HD).





# Atlas Chiropractic Software System Requirements

A properly configured network is important. Right from the onset, Atlas recommends working closely with an IT Professional to install, upgrade and maintain your network/computer infrastructure. Our Support Team is always ready to answer questions from your IT Team. We will work closely with you and your Team to ensure the best possible experience with Atlas.

**Wired Network:** Atlas requires a stable network to transmit data across quickly and completely. Wireless networks are NOT supported by Atlas. Be sure to disable any Wireless cards on your computers.

**Network Speed:** new offices installing new network hardware will benefit from installing Gigabit network hardware. Existing clinics may choose to upgrade to the Gigabit network for enhanced speed.

**Operating Systems:** Windows 'Home' versions of XP, Vista and 7 are not as robust as the Professional or Business counterparts. Networking and the limits placed on file sharing are a hindrance in most small business networks. Atlas recommends using the Professional or Business versions when possible. Be sure your computer hardware meets the minimum requirements of your specific Operating System.

**Battery Backup:** Power failures, brown-outs and spikes will not only affect your office flow, but can damage your computer/network hardware. Atlas recommends using a UPS (Uninterruptible Power Supply) for each computer and network device (router, switch, modem) on your network. The UPS performs two important functions. First, it supplies power to your systems in the event of a power failure. This allows you the time needed to properly shut down and save your database and / or continue to work through a short outage. It also conditions the power that flows from your outlets into your devices. Spikes and valleys in your power flow can damage sensitive electrical equipment. The UPS will maintain a clean flow of power to your connected devices.

**Imaging (optional):** To import paper Xrays and Documentation, Atlas recommends a digital camera (at least 4 megapixels) and a TWAIN compliant document scanner. Most of today's hardware will meet these requirements.

**Calling Module (optional):** To properly program and use the Calling Module of Atlas (optional) you will need Speakers plugged into the designated 'Calling Computer' and a Microphone to record Patient and Room names. Atlas recommends a headset with microphone and earphones to allow the recorder to check the recordings.

**Additional Software:** To utilize the Health Articles feature in Atlas, each Adjusting Table computer and the Front Desk computers should have Microsoft Word installed. In addition, you may want to consider a PDF view to view PDF documents on the Adjusting Tables and QuickTime Movie Player to view the NeuroSimulator videos.

**Data Backup:** Atlas creates a 'restore point' snapshot of your data on a daily basis. However, this is only a small part of a complete Backup Strategy. Atlas strongly recommends configuring and USING an external, off-site, multiple copy database backup plan. We also recommend fully understanding the Backup options within Atlas. Consult with your IT Professional on which plan would be best for your office.

**YOUR DATA BACKUP IS YOUR RESPONSIBILITY: FIRE, THEFT, VIRUS OR STAFF NEGLIGENCE CAN RENDER YOUR DATA UNUSABLE – RESTORING YOUR BACKUP MAY BE THE ONLY OPTION**

**Internet Access:** in order to receive software updates and patches or to receive live, remote support: you must have high speed internet access to your computers. While not required to run Atlas, it will be beneficial. Turn off all anti-virus, firewalls, screensavers, power saving options and automatic updating software prior to installing Atlas. After the installation you can schedule virus scans and automatic updates for software when it will not interfere with your computer operation (i.e. – after hours). Let your IT Professional setup and configure your computers for optimal use and safety.

If you have any questions about this information, please contact our Support Team...

**phone : 1.866.76ATLAS**

**email : support@atlaschirosys.com**